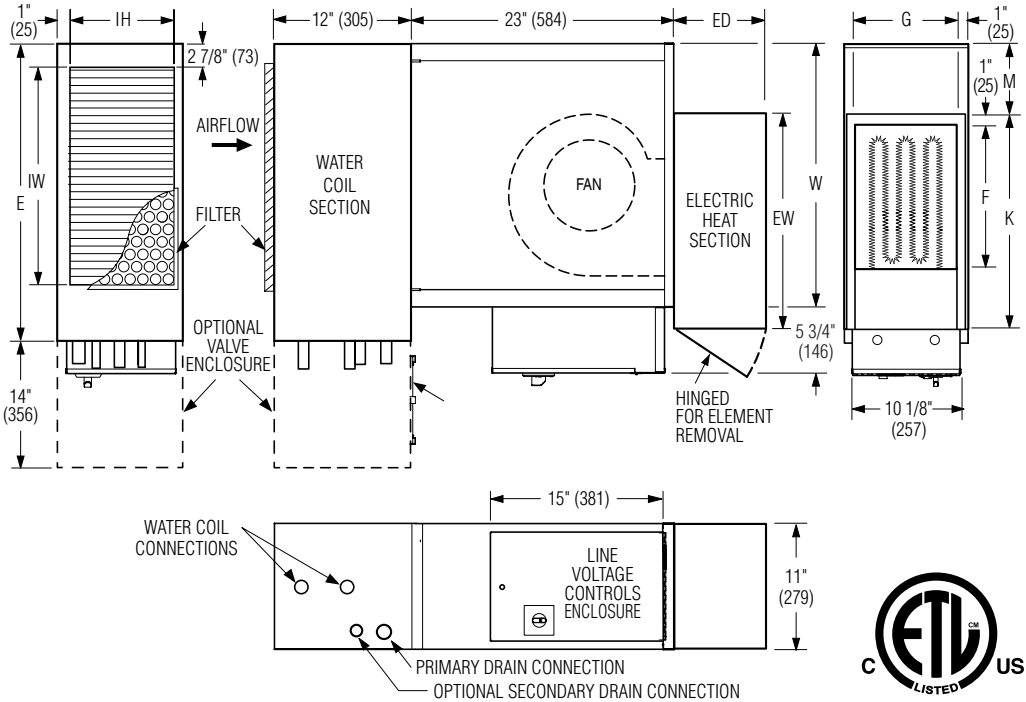


### STANDARD FEATURES:

- 20 ga. (1.0) galvanized steel casing components.
- 1/2" (13) dual density insulation, exposed edges coated to prevent air erosion. Meets the requirements of NFPA 90A and UL 181.
- Top and bottom full size access panels for ease of maintenance and service.
- Ultra-energy efficient ECM fan motor with overload protection. Solid state EPIC fan volume controller.
- Motor blower assembly mounted on special 16 ga. (1.6) angles and isolated from casing with rubber isolators.
- Single point electrical connection.
- Discharge opening designed for flanged duct connection.
- Controls mounted as standard on RH side as shown. Fan Coil ordered with LH controls (optional) are inverted and discharge duct hanging location will change.
- 1" (25) throwaway fiberglass media filter.



### WATER COIL SECTION:

- Installed on inlet as a draw through design.
- Coil (and header on multi-circuit units) is installed in insulated (fiber-free/foam) casing for increased thermal efficiency.
- 1/2" (13) copper tubes with aluminum ripple fins.
- Cooling coils include an insulated, galvanize steel drain pan with 3/4" (19) male NPT primary drain connection.
- Top and bottom access panels for inspection and coil cleaning.
- Right hand coil connection shown (looking in direction of airflow) is standard. Left hand is optional.

### Coil Options:

- 2 Pipe system:
- 3 Row C/HW.  5 Row C/HW.
  - 4 Row C/HW.  6 Row C/HW.

### Dimensional Data

Unit Size	Nominal CFM (l/s)	W	E	Inlet IW x IH	Outlet Duct Size F x G	ED	EW	K	M	Filter Size
5	500 (236)	23 (584)	26 (660)	19 x 8 3/4 (483 x 222)	12 1/2 x 9 (318 x 229)	8 (203)	18 3/4 (476)	16 7/8 (429)	6 1/8 (156)	10 x 20 (254 x 508)
8	800 (378)	37 (940)	40 (1016)	33 x 8 3/4 (838 x 222)	12 1/2 x 9 (318 x 229)	8 - 14 (203 - 356)	18 3/4 (476)	24 3/4 (629)	12 1/4 (311)	10 x 35 (254 x 889)

### Electrical Data

Unit Size	Motor HP	EPIC ECM Motor FLA			
		120V	208V	240V	277V
5	*	1.9	1.3	1.2	1.2
8	*	3.8	2.6	2.5	2.6

\* The EPIC ECM is a variable horsepower motor. Refer to Selectworks schedule for actual power consumption. FLA = Full load amperage. All motors are single phase/60 Hz.

### Coil O.D. Sweat Connections

Unit Size	Number of Rows				
	1 & 2	3	4	5	6
5	5/8 (16)	7/8 (22)	7/8 (22)	7/8 (22)	7/8 (22)
8	5/8 (16)	7/8 (22)	7/8 (22)	7/8 (22)	7/8 (22)

### ELECTRIC COIL SECTION:

- Hinged door with heater element module for easy access, removal and replacement of heater element without disturbing ductwork.
- Coil installed on unit discharge.
- Insulated coil element wrapper.
- Automatic reset high limit cut-outs (one per element).
- Flanged outlet duct connection.

### ELECTRIC COIL OPTIONS:

- Door interlock disconnect switch.
- SCR Controls
- Power circuit fusing.
- Class 'A' 80/20 Ni./Cr. Wire.
- Dust tight construction.
- Manual reset secondary thermal cut-out.

### Voltage:

- Single Phase, 60 Hz.:
- 120V  208V
  - 240V  277V
- Three phase, 60 Hz.:
- 208V
  - 480V (4 wire wye)



### SCHEDULE TYPE:

### PROJECT:

### ENGINEER:

### CONTRACTOR:

Page 1 of 2. Dimensions are in inches (mm).

DATE	B SERIES	SUPERSEDES	DRAWING NO.
12 - 14 - 20	37FH	2 - 10 - 16	37FH-2

**CONTROLS:**

- Engineered Comfort
  - Analog Controls.
  - Digital Controls.
- By others.

**OPTIONS AND ACCESSORIES:**

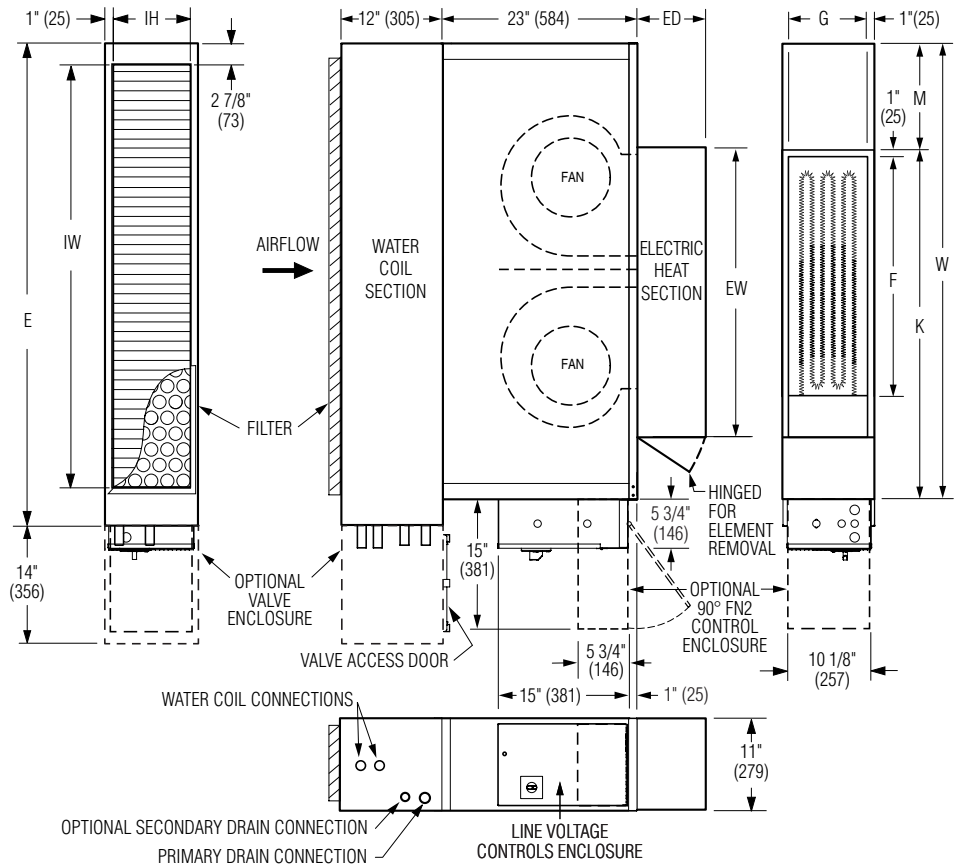
2" (51) pleated disposable filter.

- MERV 8  MERV 13
- Factory assembled valve piping package.

- components shipped loose
- mounted in full protective enclosure
- Stainless steel drain pan with drain connection.
- Secondary overflow drain connection, 1/2" (13) male NPT.

- Fiber-free liner.
- Perforated metal liner.
- Steri-liner.
- Steri-liner w/perf.
- Solid metal liner.
- Hanger brackets.
- LH controls location/ configuration.
- Safety overflow float switch.
- Toggle disconnect switch.
- Ultraviolet light package.
- Ducted return filter rack connection (see separate submittal 35FH/37FH-FFR).

- Outside Air Inlet (OAI) (see separate submittal 37FH-OAI).
- FN2 90° line voltage enclosure.
- FN3 Remote line voltage enclosure (see FN3 submittal).



**Dimensional Data**

Unit Size	Nominal CFM (l/s)	W	EE	IW x IH	Outlet Duct Size F x G	ED	EW	K	M	Filter Size
12	1200 (566)	54 (1372)	57 (1448)	50 x 8 3/4 (1270 x 222)	28 x 9 (711 x 229)	8 - 14 (203 - 356)	34 3/8 (873)	41 3/8 (1051)	12 5/8 (321)	52 x 10 (1321 x 254)

**Electrical Data**

Unit Size	Motor HP	EPIC ECM Motor FLA			
		120V	208V	240V	277V
12	*	6.2	4.1	3.9	3.8

\* The EPIC ECM is a variable horsepower motor. Refer to Selectworks schedule for actual power consumption. FLA = Full load amperage. All motors are single phase/60 Hz.



**Coil O.D. Sweat Connections**

Unit Size	Number of Rows			
	3	4	5	6
12	7/8 (22)	7/8 (22)	7/8 (22)	7/8 (22)



<b>SCHEDULE TYPE:</b>	
<b>PROJECT:</b>	
<b>ENGINEER:</b>	
<b>CONTRACTOR:</b>	

Page 2 of 2.  
 Dimensions are in inches (mm).

DATE	B SERIES	SUPERSEDES	DRAWING NO.
12 - 14 - 20	37FH	2 - 10 - 16	37FH-2