

STANDARD FEATURES:

- 20 ga. (1.0) galvanized steel casing components.
- 1/2" (13) dual density insulation, exposed edges coated to prevent air erosion. Meets the requirements of NFPA 90A and UL 181.
- Top and bottom full size access panels for ease of maintenance and service.
- Ultra-energy efficient ECM fan motor with overload protection. Solid state EPIC fan volume controller.
- Motor blower assembly mounted on special 16 ga. (1.6) angles and isolated from casing with rubber isolators.
- Single point electrical connection.
- Discharge opening designed for flanged duct connection.
- Controls mounted as standard on RH side as shown. Fan Coil ordered with LH controls (optional) are inverted and discharge duct hanging location will change.
- 1" (25) throwaway fiberglass media filter.

ELECTRIC COIL SECTION:

- Hinged door with heater element module for easy access, removal and replacement of heater element without disturbing ductwork.
- Coil installed on unit discharge.
- Insulated coil element wrapper.
- Automatic reset high limit cut-outs (one per element).
- Flanged outlet duct connection.

ELECTRIC COIL OPTIONS:

- Door interlock disconnect switch.
- SCR Controls
- Power circuit fusing.
- Class 'A' 80/20 Ni./Cr. Wire.
- Dust tight construction.
- Manual reset secondary thermal cut-out.

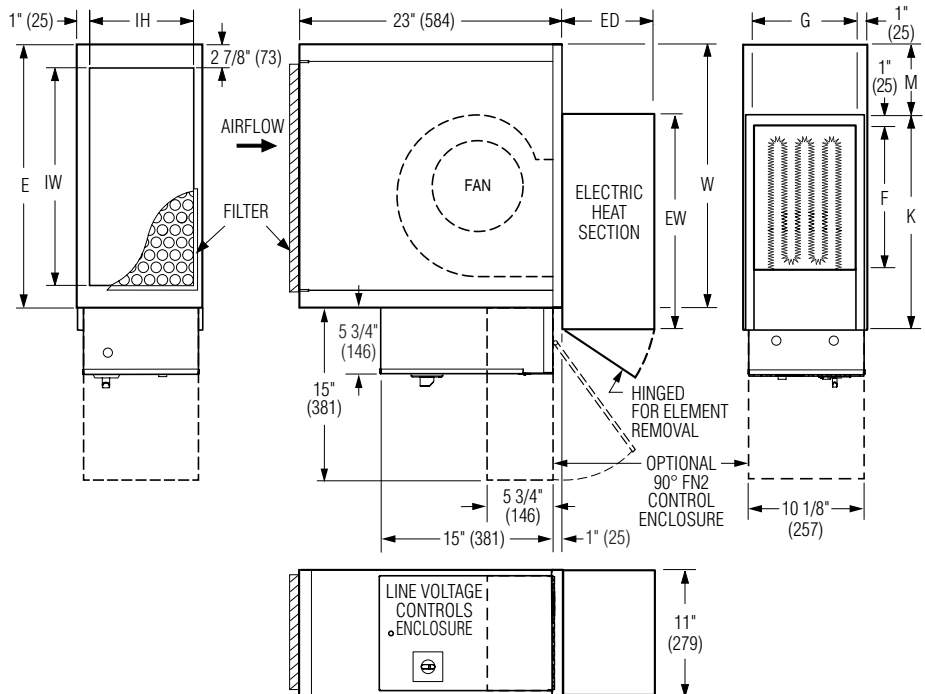
Voltage:

Single Phase, 60 Hz.:

- 120V 208V
- 240V 277V

Three phase, 60 Hz.:

- 208V 480V (4 wire wye)



Dimensional Data

Unit Size	Nominal CFM (l/s)	W	E	Inlet IW x IH	Outlet Duct Size F x G	ED	EW	K	M	Filter Size
5	500 (236)	23 (584)	23 (584)	17 1/4 x 8 3/4 (438 x 222)	12 1/2 x 9 (318 x 229)	8 (203)	18 3/4 (476)	18 3/4 (476)	6 1/8 (156)	10 x 20 (254 x 508)
8	800 (378)	37 (950)	37 (940)	31 1/4 x 8 3/4 (794 x 222)	12 1/2 x 9 (318 x 229)	8 - 14 (203 - 356)	18 3/4 (476)	18 3/4 (476)	12 1/4 (311)	10 x 35 (254 x 889)

Electrical Data

Unit Size	Motor HP	EPIC ECM Motor FLA			
		120V	208V	240V	277V
5	*	1.9	1.3	1.2	1.2
8	*	3.8	2.6	2.5	2.6

* The EPIC ECM is a variable horsepower motor. Refer to Selectworks schedule for actual power consumption. FLA = Full load amperage. All motors are single phase/60 Hz.



SCHEDULE TYPE:

PROJECT:

ENGINEER:

CONTRACTOR:

Page 1 of 2.
Dimensions are in inches (mm).

DATE

B SERIES

SUPERSEDES

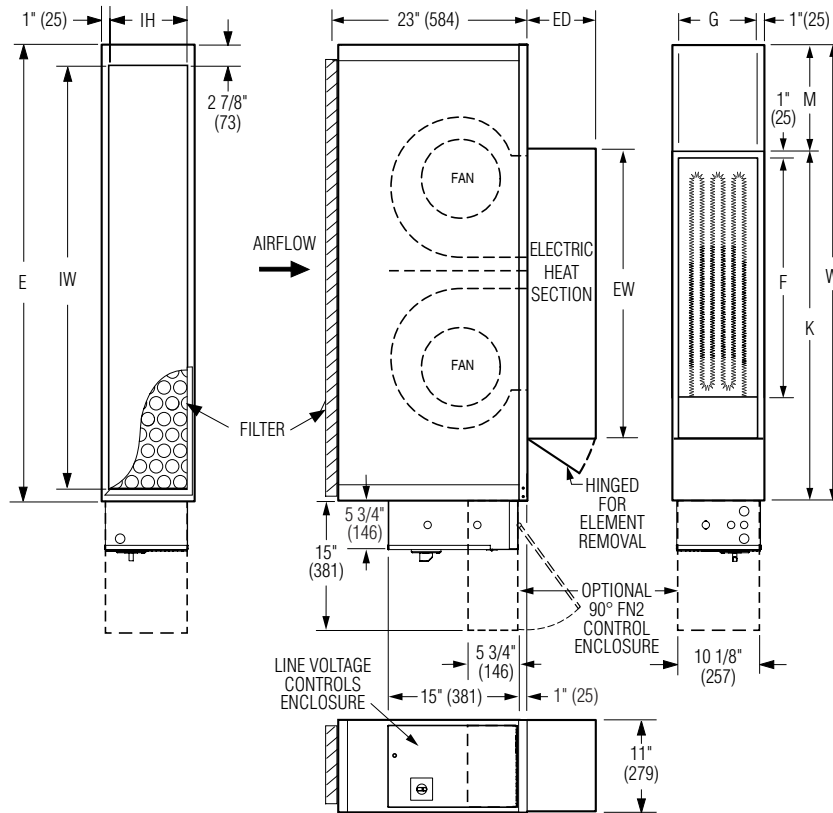
DRAWING NO.2

11 - 30 - 20

37FH

2 - 10 - 16

37FH-3



CONTROLS:

- Engineered Comfort
 - Analog Controls.
 - Digital Controls.
- By others.

OPTIONS AND ACCESSORIES:

- 2" (51) pleated disposable filter.
 - MERV 8
 - MERV 13
- Fiber-free liner.
- Perforated metal liner.
- Steri-liner.
- Steri-liner w/perf.
- Solid metal liner.
- Hanger brackets.
- LH controls location/configuration.
- Toggle disconnect switch.
- Ducted return filter rack connection (see separate submittal 35FH/37FH-FFR).
- FN2 90° line voltage enclosure.
- FN3 Remote line voltage enclosure (see FN3 submittal).

Dimensional Data

Unit Size	Nominal CFM (l/s)	W	E	IW x IH	Outlet Duct Size F x G	ED	EW	K	M	Filter Size
12	1200 (566)	54 (1372)	54 (1370)	48 1/4 x 8 3/4 (1226 x 222)	20 x 9 (508 x 229)	8 - 14 (203 - 356)	34 3/8 (873)	41 3/8 (1051)	12 5/8 (321)	10 x 52 (254 x 1321)

Electrical Data

Unit Size	Motor HP	EPIC ECM Motor FLA			
		120V	208V	240V	277V
12	*	6.2	4.1	3.9	3.8

* The EPIC ECM is a variable horsepower motor. Refer to Selectworks schedule for actual power consumption. FLA = Full load amperage. All motors are single phase/60 Hz.



SCHEDULE TYPE:

PROJECT:

ENGINEER:

CONTRACTOR:

Page 2 of 2.
Dimensions are in inches (mm).

DATE	B SERIES	SUPERSEDES	DRAWING NO.
11 - 30 - 20	37FH	2 - 22 - 17	37FH-3